

## TOWNSVILLE ORCHID SOCIETY INC.



### January 2021 Bulletin

Full contact details are on our website  
<http://townsvilleorchidsociety.org.au>

Postal Address:

PO Box 836 D.C.  
AITKENVALE QLD 4814

Email: [townsvilleorchidsociety@gmail.com](mailto:townsvilleorchidsociety@gmail.com)

*Patron:* Jean Nicholson

*President:* Greg Kelly Ph. 0474 305 864

*Secretary:* Jan Allen

*Treasurer:* Jeff Knowles

*Bulletin Editor:* Noel Grant Email: [grantnml@bigpond.com](mailto:grantnml@bigpond.com)

Hall Location:

Joe Kirwan Park  
Charles Street, KIRWAN

Annual Membership Fees are due **1<sup>st</sup> September** each year

Family \$20.00

Single \$15.00

Details for paying membership fees: BSB: - 064823

Account Number: - 0009 0973

Name of Account: Townsville Orchid Society Inc.

Commonwealth Bank, Aitkenvale.

*Are you currently un-financial? To remain a member of the Townsville Orchid Society Inc. and to continue to receive the TOS Bulletin, you MUST pay your annual membership.*

### The President's Comments

Welcome to all.

Welcome to a new and better 2021. I trust that you had a relaxing break since the last meeting. Most of my time was spent with family but I always find time to take a stroll through the bush house at least once a day. I am always astounded at how much better it looks after a couple of days' rain. For me, this is the time when all the recently repotted plants take off with new shoots, or roots, visibly growing on a day-to-day basis. I have had a few flowers bloom as well. Nothing too spectacular, most were reasonable but flowers all the same.

I thought that the November meeting went well. Quality plants in the display, great food for the afternoon tea and the large raffle went off well. Many thanks to all who helped with the afternoon.

### **Changes for the January Meeting.**

At the November Management Committee meeting, it was agreed that, if the Covid-19 situation remained the same, the club would revert to the usual meeting set-up.

Afternoon tea will again be managed by the Society. Please bring a plate. The shop will return to the main hall to allow for afternoon tea to be served in the back room.

We will also return to using the Attendance Book rather than requesting members to book to come to a meeting. The club is still required by Covid-19 regulations to keep a register of attendees, so please ensure that you enter your name in this book - please print clearly. If this is not up to standard, where names are unreadable, we will have to return to making bookings.

### **Popular Vote**

At the November meeting, I spoke to the attending members before the meeting started, that they should go and cast their votes for the Popular Vote competition, however votes made at the meeting were disappointingly fewer than double digits. It takes some time for members to place tags in every plant on display as well as putting out slips of papers, pencils etc. and it is very frustrating for them if hardly anyone bothers to vote. Simply put - if there is not a vast improvement in members participating, I cannot see any reason for the competition to continue.

### **Ingham's Field Day Sunday 11<sup>th</sup> April 2021**

I have made some preliminary inquiries with Campbell Coaches regarding a bus for the Field Day and how the numbers on the bus would be impacted by Covid-19 directions. I intend to have some issues discussed at the next Committee Meeting and the matter will be further raised at the next General Meeting.

Good growing.

Greg Kelly

## Minutes from the Management Committee Meeting held Friday 20<sup>th</sup> November 2020

Meeting opened: 7.33pm by President Greg Kelly

**Present:** Greg Kelly, Robyn Dundas, Jan Allen, June Cairns, Jeff Knowles, Robert Rasmussen, Noel Grant, Ted Boon, Bill Hughes, Ruth Whiting, Leonie Johnson.

**Apologies:** Nil

### Minutes

Motion: That the minutes of the previous meeting be accepted as a true and correct record

M: N. Grant S B. Hughes **Carried**

Business arising: Nil.

### Correspondence.

**Newsletters/Catalogues:** Orchids- American OS Bulletin September; Maroochydhore Orchid Society October Newsletter; Orchids - American OS Bulletin October; TATOS November newsletter; Herb Society of N Q's newsletter, Potpourri; Nightcliff Orchid Society; Maclean & Dos Inc. November bulletin; MDOS Orchidwise newsletter;

**Mail Inwards:** Membership application; Query on membership status and responses; By-laws for website; Shop suggestion; Shop takings and money transfer; Request for information and responses; A Guide to Native Orchids of Australia by David Jones flyer; OQI report; Sunnyview order confirmation - raffle plants; Sunnyview order confirmation – advertising; C-mobile account - \$45.80; Membership Application; Netbank transfers - receipts x 5; Tropical Exotique Flask List;

Query re pots and response; Thank you from Proserpine Orchid Society; Update on Australian Orchid Council Conference & Show;

**Mail Outwards:** TOS Sales Day information; Associations Incorporation Form 12 -1 with cheque; Letter to Alan Hughes re Honorary Membership; Reminder - Sunday's meeting and registration

Motion: That the inwards correspondence be accepted and the outwards adopted.

M: J. Allen S: R. Dundas **Carried**

Business arising: Nil

### New Member Applications:

Jan & Brian Richardson – accepted - Open

Elvira & Philip Dixon – accepted - Novice

Brenda Connolly – accepted - Novice

### Treasurer's Report

TOS available funds are healthy. Details are available at monthly meetings.

Motion: That the treasurer's report be accepted and accounts be passed for payment

M: J. Knowles S: R. Rasmussen **Carried**

Business arising:

Motion: 'Move that we have a \$200 float for the Raffle and Shop for the 2020-2021 meetings'

M. J. Knowles S. R. Rasmussen **Carried**

### Vice President Reports:

**Show** (R Dundas):

- Sales Day was successful.

**Hospitality** (R Whiting):

Sunday – six pizzas

- *set out tables – 8am setup (Greg) - 11am setup (others)*
- Bill needs help with the raffle. No lucky door prize.

### **General Business:**

1. Greg Kelly noted that it has been brought to his attention that the Ingham Field Day is on the same weekend as our April Show. The Herbert River Orchid and Allied Plant Society Inc. have requested that we change our April Show to the following week. The TOS Management Committee agreed that there would be no problem changing the Autumn Show to the 16<sup>th</sup> – 18<sup>th</sup> April, 2021. Greg will ring his counterpart to confirm our decision.
2. Need to get Peter to change email password.
3. Meetings – if nothing changes, members sign-in book and afternoon tea will go back to normal.
4. Librarian – trying to get books returned.
5. Jeff – presentation on Sunday – video on fungi.
6. Printer is starting to play up. Jeff will investigate it.
7. Feedback from Sales Day – one complaint about not enough notice (it was constantly mentioned on Facebook). Otherwise, a lot of positive responses.
8. Robyn – thank you to Leonie for her work leading up to the Sales Day.

Meeting Closed at 8.33 pm

---

Greg Kelly - President

---

Jan Allen - Secretary

---

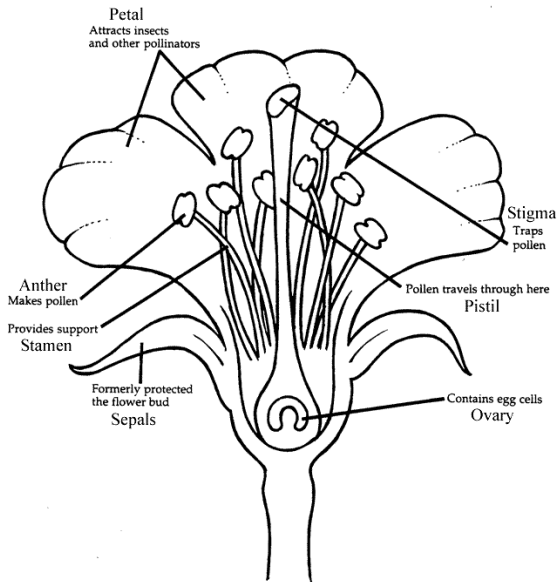
### **Why is this flower an Orchid?**

Orchids belong to the smaller of the two great groups of flowering plants - the monocotyledons (or monocots), which include lilies, orchids, palms and grasses. The larger group contains the dicotyledons (the dicots). The majority of common garden plants, most trees and broad-leafed flowering plants, such as roses and geraniums, are dicots.

Monocots are distinguished by having only one seed leaf in the embryo contained in the seed (dicots have two). Most of you will have grown peas or beans (which are dicots) at some time, and I am sure you all remember those two leaves breaking the ground surface as the young plants sprouted. Monocots typically also have flower parts, such as sepals and petals, based on a plan of three (imagine a typical orchid flower), whereas dicots have parts based on a plan of four or five (or multiples thereof). Most monocots have leaves with parallel veins, while dicots usually have a meshlike pattern. The stems of monocots do not have a continuous cambium layer, or region of new growth, so they do not increase in stem thickness, produce annual growth rings or have woody stems, as do typical trees, which are dicots.

The primary characters that distinguish the orchids as a group are found in the flower:

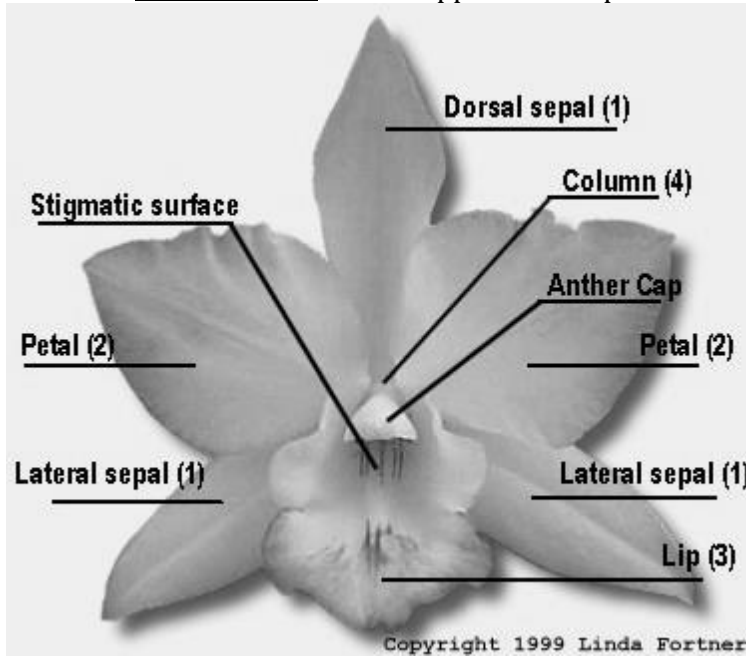
Parts of a Flower



At the bottom of an unspecialized **non-orchid flower** is the stem that supports it, called the **pedicel**. Directly above, and at the base of the flower itself, is a whorl of green, leaflike organs called **sepals**. Above and inside the sepals is a second whorl of coloured **petals**. These are the asexual parts (“asexual” means NOT sexual) and they are developed to protect the flower or to attract a pollinator. Inside (also arranged in whorls) are the sexual portions of the flower. First are the male **stamens**, which consist of a **filament** (the slender stalk that supports the anther) and an **anther** (usually an arrangement of four sacs filled with loose pollen grains). There may be several whorls of stamens. In the centre of the flower is the female **pistil**, which is composed of an enlarged portion (the **ovary**) topped by a stalklike **style** with a **stigma** at its apex. The **pollen** in the anther is powdery and is usually carried from the anther of one flower to the stigma of another

flower by a pollinating agent (moth, fly, bird etc).

The usual **orchid flower** is also supported on a pedicel. The ovary, however, with its ovules, seems to be an



integral part of the pedicel because it is embedded within the upper portion of the pedicel **below** the attachments of the petals. The orchid flower is thus said to have an inferior ovary. The sepals and petals are usually similar, often highly coloured, and in sets of three. One petal is developed as a landing platform for the pollinator and is called the **lip** (or **labellum**). Most orchids can be divided by a line from the top of the dorsal sepal to the centre of the lip, where the portion of the flower on the left side of the line can be seen as a mirror image of the right side. This is described as making the flower **bilaterally symmetrical**.

The sexual portions of the orchid flower are quite different from other generalized flowers. All of the male organs and the female organs (the filaments, anthers, style, and stigma) are reduced in number and are usually fused into a single structure called the **column**. Most orchids have a single anther at the apex of the column. The pollen grains are bound together with a sticky substance in masses called **pollinia**. As a visiting insect backs out of the flower, the pollinia are picked up from the anther and stick to the body of the insect.

One of the characteristic differences between the orchid family and other advanced monocots is that the fertile stamen or stamens are all on one side of the flower opposite the lip. The lip is oriented upward in the bud, but as it later develops, twisting takes place in the pedicel or ovary so that the lip is usually oriented downward by the time the flower opens, a process called **resupination**. The lip becomes a handy landing platform for pollinators.

Orchid seeds are extremely small and contain an embryo that lacks endosperm (starchy nutrient tissue). In nature, orchid seeds need the presence of a fungal mat called mycorrhiza in order to germinate. Happily, a method has been found in the laboratory where seeds can be germinated without the fungus, which is why so many orchid seedlings are now available.

It is interesting that all the special characters of orchid flowers, such as the joining of the male and female organs to form the column, the masses of pollen called pollinia, and the tiny seeds without endosperm, are found individually in other groups of flowering plants. However, it is through the combination of all of these characters that we now know the family of flowering plants called the Orchidaceae.

Noel Grant

This is a reprint of an article first published in the TOS Bulletin in February 2010

---

## **Minutes from the General Meeting held Sunday, November 22<sup>th</sup> 2020.**

Meeting opened: 1.02 pm. President Greg Kelly in the chair

**Present** 57 members as per registration list.

**Apologies:** Reg Dix; Malcom and Mary Triebel; Alan Hughes;

**Visitors.** Michelle Taylor; Donna Brown.

### **Minutes:**

Motion: That the minutes of the previous meeting be accepted as a true and correct record.

Moved: M. Soper

Seconded: S. Woods

**Carried**

**Business out of minutes.** Nil.

**New Correspondence.** No new correspondence since Management Meeting on 23rd October 2020.

**Business arising:** Nil

### **Treasurer's Report:**

TOS available funds are healthy. Details are available at monthly meetings.

Motion: That the treasurer's report be accepted and accounts be passed for payment.

Moved: J. Knowles

Seconded: B. Howell

**Carried**

Business from Treasurers Report: *Profit of \$1000.42 from Sales Day -includes raffle, door takings and hire of tables.*

### **General Business:**

1. Shedly Hinds passed away last week. No public funeral. He had not been well for a while.
2. Thank you to those people who worked at the Sales Day.
3. Club has purchased \$300 worth of plants for the raffle.
  - drinks in the fridge are free
  - food to the value of \$200 provided
4. Members are asked to read the bulletin in January to know what has been decided.
5. Show date for April have clashed with the Ingham Field Day so we have put our Autumn Show back to the following week (16th – 18th April 2021).
6. Jeff Knowles - video
7. Charlie Truscott was asked about the Dendrobium beetle. Need to do something immediately – sometimes use 'OneShot' to get rid of them.

#### Discussed hard and soft scale:

- need to treat plants with soft scale with a systemic insecticide (Spectrum). Brought up by ants – need to get rid of them.
  - hard scale – mix of dishwashing and cooking oil - spray on to scale – look on TOS webpage – smothers them
  - don't use Sulphur with white oil.
  - Iron is important in orchids. Orchids do suffer from iron deficiency. Add iron to fertilisers you are already using. Charlie sprays it on as a foliate fertilizer in the afternoon.
  - Hydration in these summer months is important– phalaenopsis suffer and dendrobies -water the floor of the bushhouse – sand on the floor.
8. Afternoon Tea
  9. Registrar's Choice (Ted) –

Hybrid - C. Lacey Michelle Matherne - Ruth Whiting 82  
 Species – *Rhy coelestis* - Noel Grant 80

Novice - No plants

10. Ted Boon – saw Alan Hughes at the hospital and he is looking quite well but due to his condition, he is unable to make it to meetings. He asked Ted to say hello to everyone today.

11. Raffle.

Meeting Closed: 3.30pm  
 Greg Kelly – President

Jan Allen - Secretary

**Tabled Plants: PRIZE WINNERS FOR THE MONTH OF NOVEMBER 2020**

**Bold Type** indicates a correction using Orchidwiz.

Section			TOS No.
<b>OPEN</b> PAPHIOPEDILUM Any Other	1st	Paph Prim N Proper	C Lee
	2nd	Paph Macabre ‘Magic Winds’ x Hsinying Carlos	L Johnson
CATTLEYA 74mm to 114 mm	1st	C Lacey Michelle Matherne	R Whiting
	2nd	Rlc Chief Journey ‘First Choice’	R&E Dundas
	3rd	Lc Canhamia	J Cairns
CATTLEYA Miniature	1st	C Jungle Gem ‘Kelsey’	L Johnson
	2nd	<b>Rth Rosella’s Free Angel</b> (Rth Free Spirit x C Angel Flare)	R Whiting
CATTLEYA Encyclia	1st	Cty Burdekin Honey ‘Shona’	R&E Dundas
	2nd	Enc Oakland	L Johnson
	3rd	Epcl Burdekin Emerald x Burdekin Bumble Bee	G&S Kelly
CATTLEYA Nodosa Influence	1st	C Hippodamia	W&C Sewell
	2nd	Rby Golden Tang	L Johnson
	3rd	<b>Bc Star Fire</b> (Rolf Keowee x B Nodosa)	P&M Cooper
CATTLEYA Broughtonia Influence	1st	Ctna Why Not Walk	K Owens
	2nd	Ctna Why Not Walk	K Owens
	3rd	Ctna Why Not Walk	K Owens
AERIDES	1st	Aer Bangkok	N&M Grant
	2nd	<b>Aerides Jack Webster</b> ( <i>Aer quinquevulnera</i> x <i>rosea</i> )	N&M Grant
	3rd	Aer Bangkok	J Cairns
VANDA To 64mm	1st	V Leamy	P&M Cooper
	2nd	V Fiftieth State Beauty ‘Rich Red’	G&S Kelly
	3rd	V Pranerm Cloud x Meda Arnold	K Owens
VANDACHOSTYLIS	1st	Van Viboon Velvet ‘Korat’	G&S Kelly
	2nd	Van Precious ‘Glorious’	G&S Kelly
	3rd	Van Pine Rivers ‘KBR’	G&S Kelly
VANDACEOUS Intergeneric to 40mm	1 <sup>st</sup>	<b>Rnst Bangkok Beauty</b> (Ren Azimah X Ren Bangkok Flame)	R&E Dundas
	2 <sup>nd</sup>	<b>V Viraphandhu Kenny</b> ( <i>V denisoniana</i> x <i>V Kenny Gold</i> )	N&M Grant
DENDROBIUM Any Other Hybrid	1st	D Little Green Apples	L Johnson
	2nd	D Gatton Sunray	C Lee
	3rd	D Dalvey x <i>tangerinum</i> x <i>helix</i>	K Owens

DENDROBIUM Intermediate	1st 2nd 3rd	D Unknown D Airy Crimson	R&E Dundas R&E Dundas
DENDROBIUM Spathulata Large	1st 2nd 3rd	D Ray's Twist D Unknown D Spider Magic x <i>tangerinum</i>	K Owens C Lee R&E Dundas
DENDROBIUM Spathulata Small	1st 2 <sup>nd</sup> 3rd	<b>D. Alice's Thomas</b> x <i>D carronii</i> D Mem Kip McKillop x <i>D canaliculatum</i> D Rambo	R&E Dundas K Owens R Whiting
PHALAENOPSIS Small – any colour	1st 2nd 3rd	Phal Zheng Min x Phal Parakeet	R Whiting
ONCIDIUM Any Other Hybrid	1st 2nd 3rd	Tolu Unknown Milt Golden Spider 'Copious' Mtps Breathless	R Whiting L Johnson C Lee
<b><u>NOVICE</u></b> MISCELLANEOUS	1st 2nd 3rd	D Maid of Gloucester Phal Unknown	J Stevens J Stevens
<b><u>SPECIES</u></b> DENDROBIUM Hardcane	1st 2nd 3rd	<i>D tangerinum</i> <i>D antennatum</i>	K Owens K Owens
DENDROBIUM Soft Cane	1st 2nd 3rd	<i>D chrysotoxum</i> <i>D parishii</i> <i>D formosum 'giganteum'</i>	L Johnson R&E Dundas L Johnson
VANDACEOUS	1st 2nd 3rd	<i>Rhy coelestis</i> <i>Chsch lunifera</i> <i>Sbk robusta</i>	N&M Grant N&M Grant C Lee
VANDAE – Aerides	1st 2nd 3rd	<i>Aer houlettiana</i> <i>Aer maculosa</i> <i>Aer flabellata</i>	N&M Grant L Johnson N&M Grant
MISCELLANEOUS	1st 2nd 3rd	<i>Phal pulcherima</i> <i>Paph concolor</i>	G&S Kelly K Owens
BULBOPHYLLUM	1st 2nd 3rd	<i>Bulb lobbii</i> 'Stardust' <i>Bulb corriferum</i> <i>Bulb barbigerum</i>	A&J Knowles A&J Knowles A&J Knowles
MISCELLANEOUS	1st 2nd 3rd	<i>Max tenuifolia</i> <b><i>Thunia marshalliana</i></b> <i>C maxima</i> 'Rubra'	C Lee L Johnson L Johnson
AUSTRALIAN NATIVE SPECIES	1st 2nd 3rd	<i>D wassellii</i>	A&J Knowles
<b><u>POPULAR VOTE</u></b> OPEN	1 <sup>st</sup>	C Lacey Michelle Matherne	R Whiting
NOVICE	1st	Nil Votes	
SPECIES	1st	<i>Rhy coelestis</i>	N&M Grant



## Points for Tabled Plants after November 2020

Name	Open	Novice	Species	Aggregate
Blanchard D		6	2	8
Cairns J	8			8
Cooper P&M	6			6
Day K			4	4
Dundas R&E	46		7	53
Grant N&M	36		33	69
Howell W&L		6	8	14
Hughes W	4		4	8
Johnson Lyn	49		32	81
Kelly G&S	28		4	32
Knowles A&J			24	24
Lee C	18		6	24
Lucke P&J	2		10	12
Nicholson J	3			3
Owens K	30		16	46
Sewell W&C	4		3	7
Stevens J		7		7
Whiting R	19		4	23



**Registrar's Choice November 2020** Species: *Rhynchostylis coelestis*  
80 points N & M Grant





**Registrar's Choice November 2020**

**Open:** Cattleya Lacey Michelle Matherne  
82 Points  
R. Whiting

## Remember when . . . .

The Townsville Orchid Society hosted the Asia Pacific Orchid Conference (APOC) here in Townsville in 1998. This photograph shows Doug Benson and the late Sheddie Hinds admiring the very impressive display put together by Sheddie, and Clara and Warren Sewell.



### **Townsville Orchid Society Members' Cash Shop. A few bits of information.**

1. Club shirts (\$30 for members)
  - a. Ordered (please pay and collect): - Trevor J, Kathy R, Deanne, Kathy O
  - b. Ordered and paid: - Sue M, Mark D, Linda H and Ann R. Diane D (part paid)
  - c. For Sale
    - 1 x Large – No pocket
    - 2 x Small – with pocket
    - 1 x Xsmall – with pocket.
2. SA Bark (\$34 for members)
  - a. Ordered:- Sue K (1 x medium), Noel H (1 x small)
  - b. For sale:- 3 x large, 1 x small.
3. Membership fees can also be paid at the Shop.
4. Anyone requiring bulk supplies from Fernland, write your request in the order book at the cash register.

See you at the meeting.

*Jeff and Alison.*

January, 2021.